

54/76

76

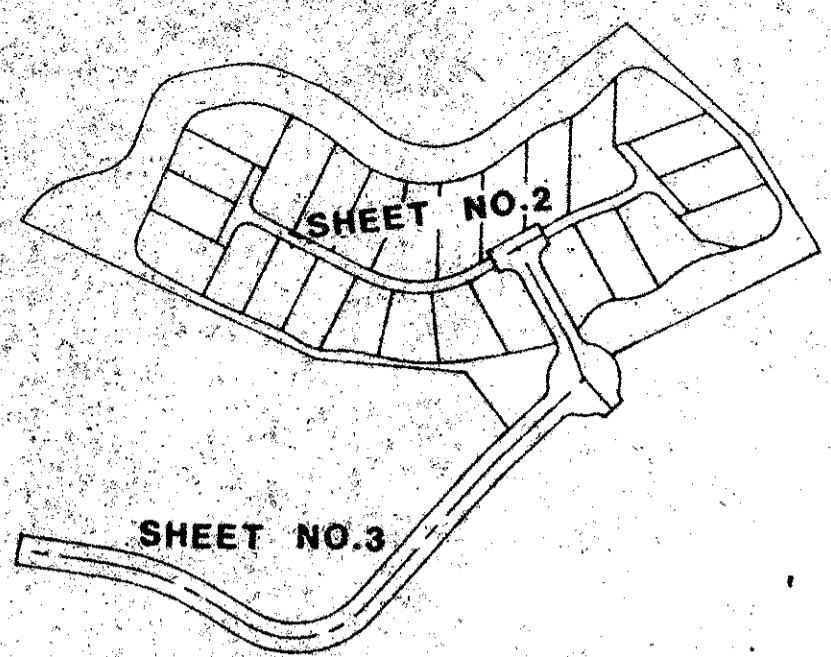
# BROOKSIDE - PLAT NO. 3 OF PALM BEACH POLO AND COUNTRY CLUB

## WELLINGTON P.U.D. IN PART OF SECTION 14, TOWNSHIP 44 SOUTH, 41 EAST PALM BEACH COUNTY, FLORIDA IN THREE SHEETS SHEET NO. 2

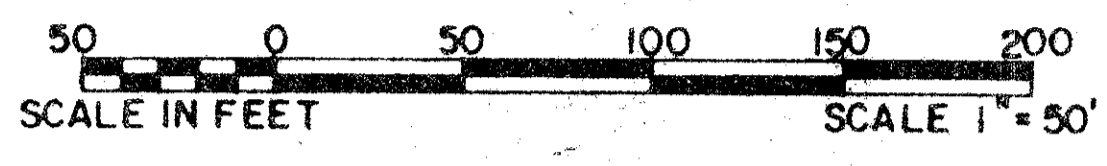
GEE & JENSON  
ENGINEERS - ARCHITECTS - PLANNERS, INC.  
WEST PALM BEACH FLORIDA  
MAY 1986

SUBDIVISION # Brookside  
BOOK 54 PAGE 76  
FLOOD ZONE A-1 FLOOD MAP #100A  
QUAD # 62 ZONING  
SE ZIP CODE 33411  
PUD NAME Wellington Plat 3

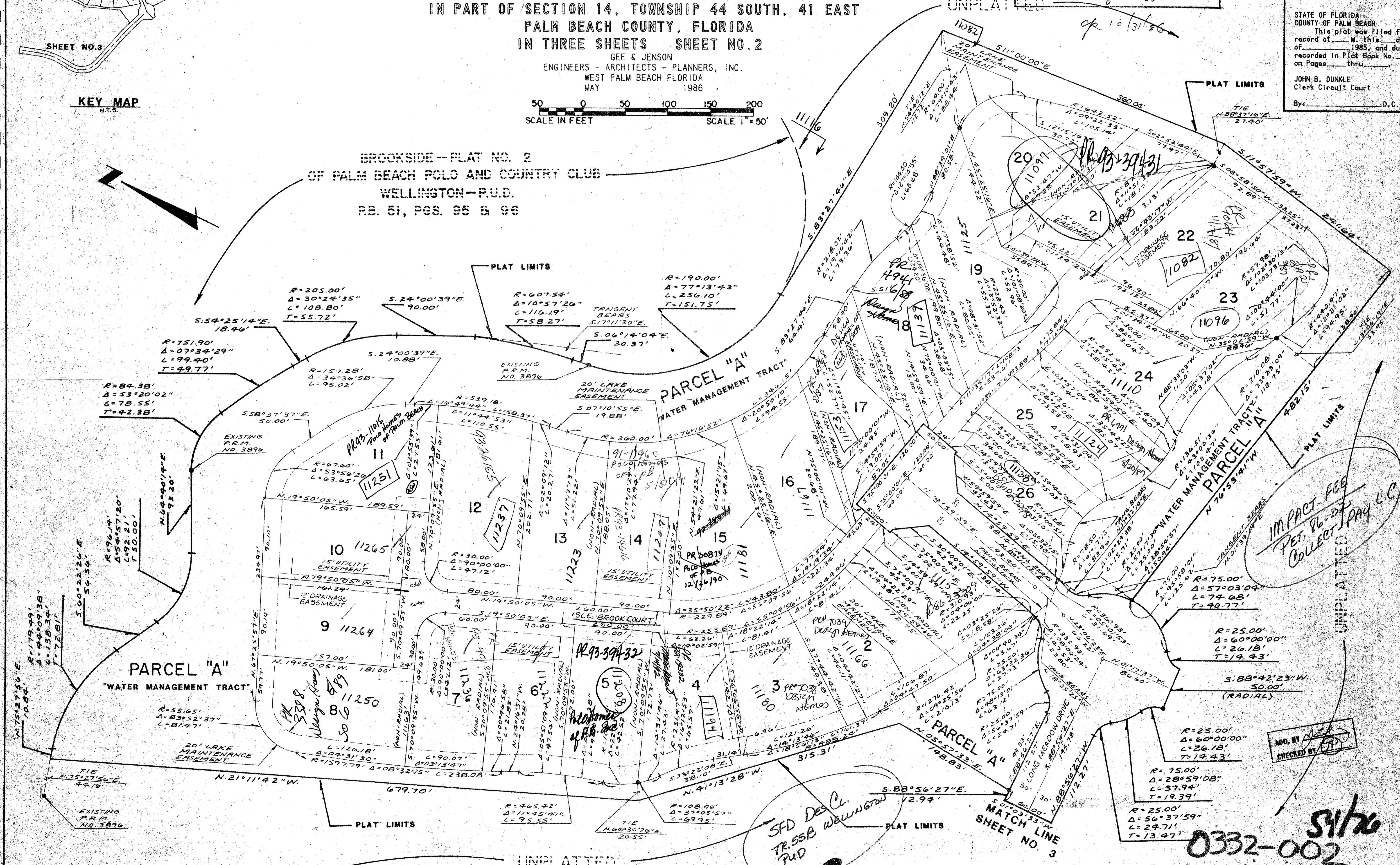
STATE OF FLORIDA  
COUNTY OF PALM BEACH  
This plat was filed for  
record at \_\_\_\_\_ M. this \_\_\_\_\_ day  
of \_\_\_\_\_ 1985, and duly  
recorded in Plat Book No. \_\_\_\_\_  
on Pages \_\_\_\_\_ thru \_\_\_\_\_  
JOHN B. DUNKLE  
Clerk Circuit Court  
By: \_\_\_\_\_ D.C.



KEY MAP  
N.T.S.



BROOKSIDE - PLAT NO. 2  
OF PALM BEACH POLO AND COUNTRY CLUB  
WELLINGTON - P.U.D.  
RB. 51, PGS. 95 & 96



IMPACT FEE  
PET. 86-37  
COLLECT PAY L.C.

SFD Des. C.  
TR. 55B Wellington  
PUD

ADD BY [Signature]  
CHECKED BY [Signature]

54/76  
0332-002

BROOKSIDE-PLAT No. 3 OF P.B. P. AND C.C. WELLINGTON